



B1125 Transport Working Group

Monday 8 Sept 2025

B1125 Transport Working Group

Introductions

Parish Councils

Councils

Steve Merry – Suffolk County Council

John Rozier – Suffolk County Council

Carolyn Barnes – East Suffolk Council

Sizewell C

Richard Bull – Head of Planning

Jez Porter – Roads & Stakeholder Lead

Simeon Seward – Assistant Project Manager for Local Roads Schemes

Rebecca Quigg – Transport Coordinator

Zoe Botten – Community Relations Manager

WSP

Richard Clarke – Project Design Lead

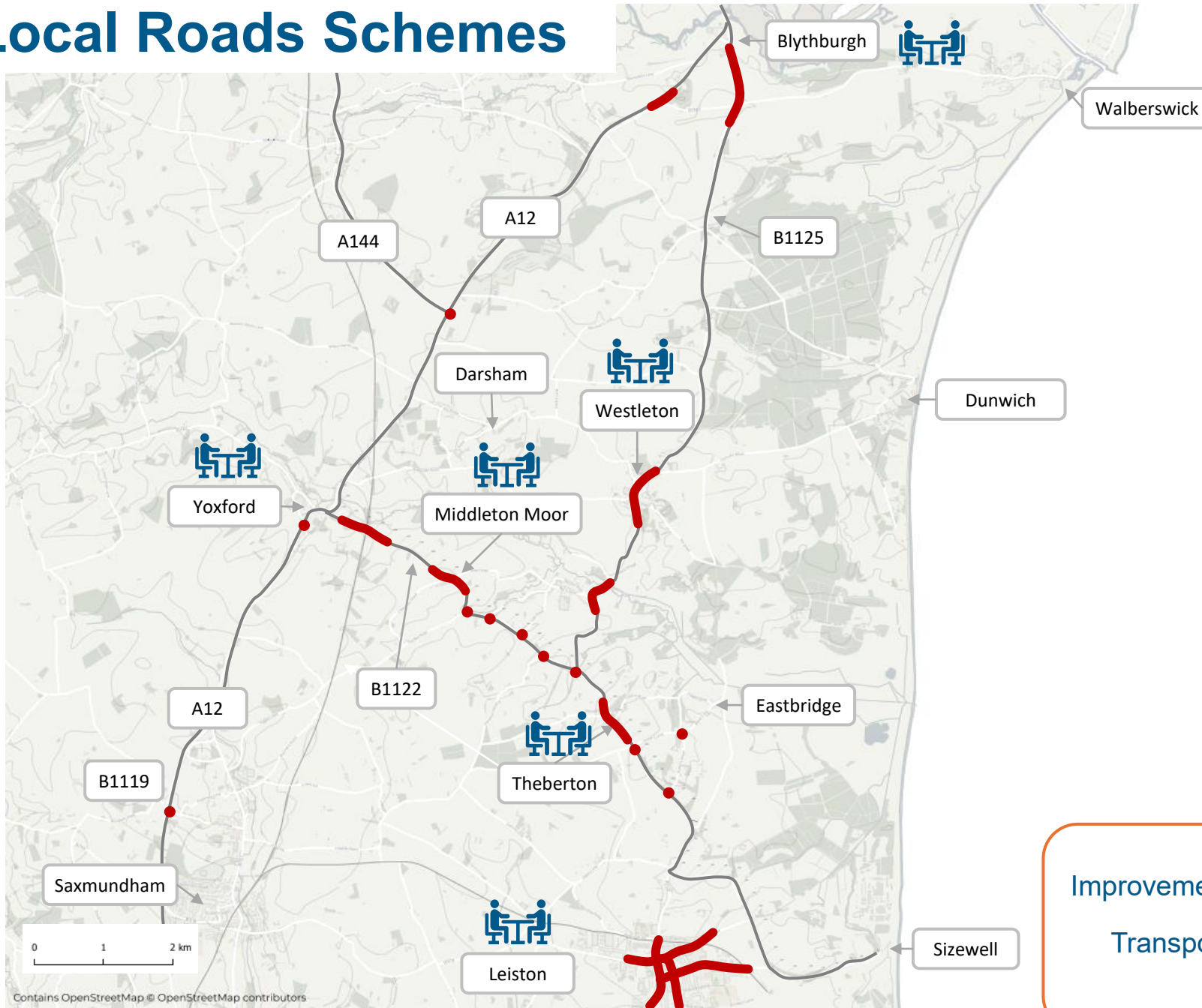


B1125 Transport Working Group

Agenda

- **Draft Programme for B1125 scheme**
- **Design Updates**
 - A12/B1387 junction
 - Closure of B1125
- **Experimental Traffic Order summary and update**
- **Scheme acceptance**
- **B1387 design and implementation update**
- **AOB**

Local Roads Schemes



Typical improvements

- New and enhanced pedestrian footways and crossings
- New road surfacing
- Village gateways
- Safety improvements and side road visibility

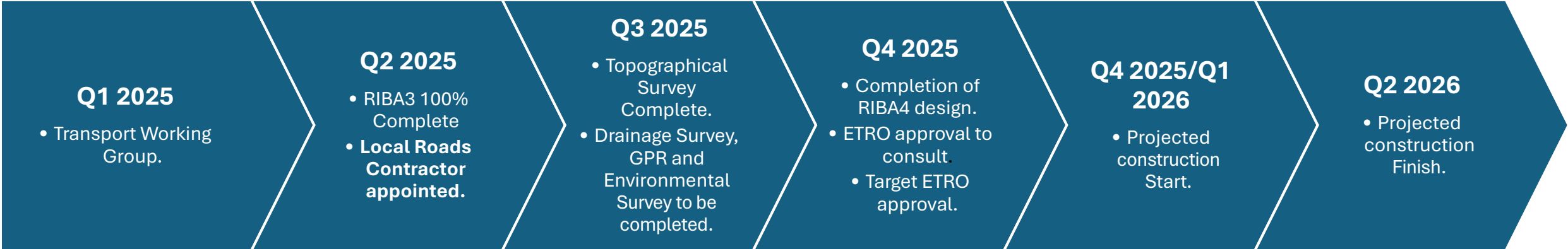
Improvement scheme

Transport Working
Group



B1125 Transport Working Group

Programme update



Scheme overview

- Modifications to A12 / B1387 junction
- Full road closure on B1125 Dunwich Road (approx. 300m long - red line on map)
- New / modified signage and junction reconfigurations to support the closure

Design update

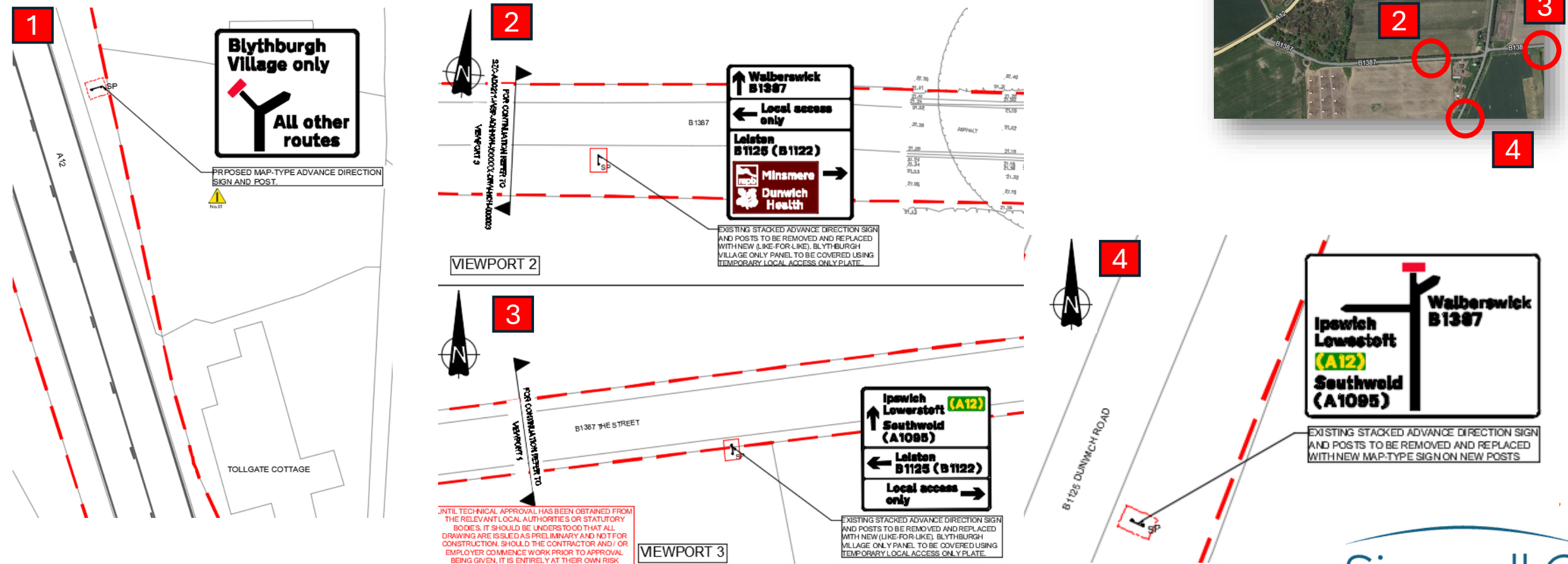
- Detailed design refinement, but no change to principles of scheme.
- Surveys underway (topographical, drainage and GPR) at A12 / B1387 and Angel Lane / Chapel Road – required to progress detailed design.
- Design refinement of directional signage to best guide drivers.



B1125 closure cont...

Advanced Direction Signs

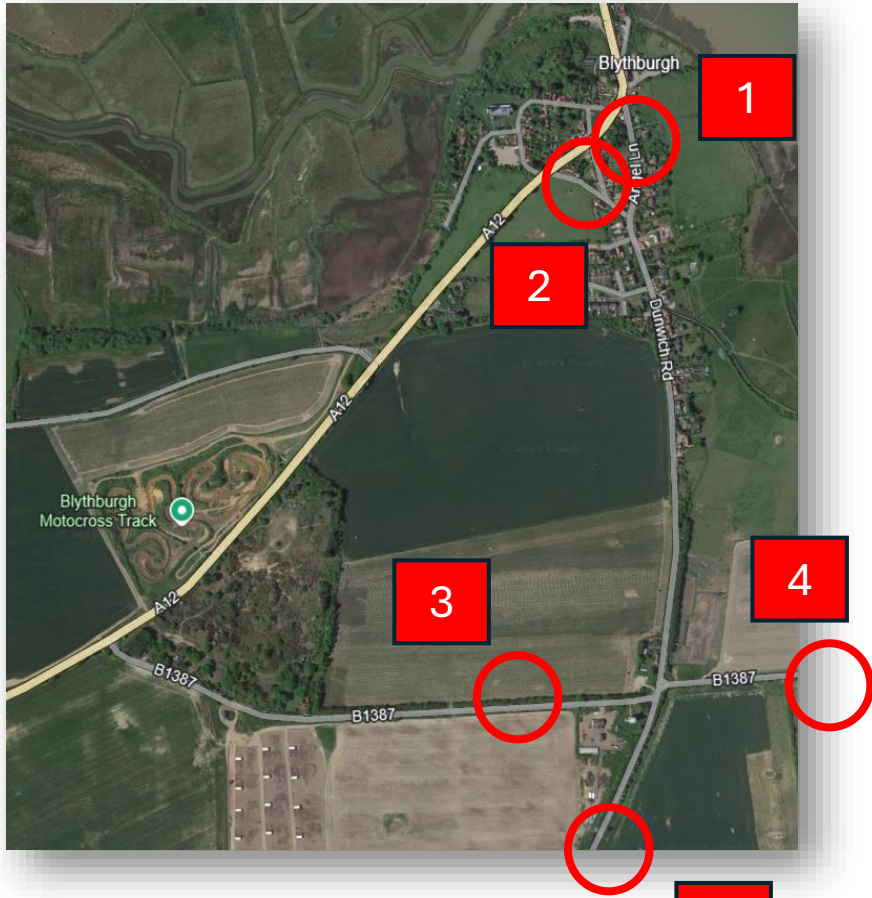
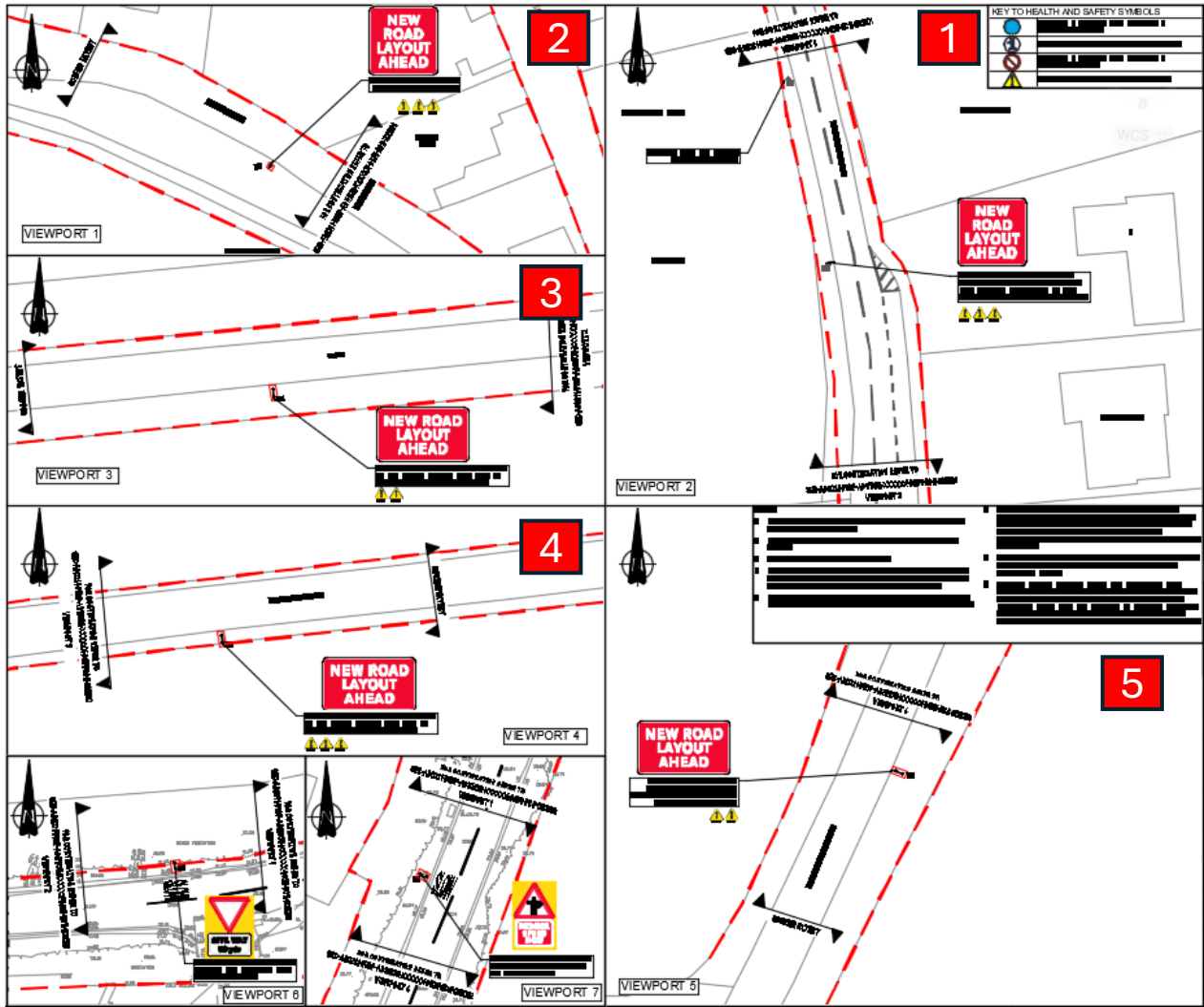
- Current proposals shown below
- On-going design discussions regarding best form of signage to communicate closure



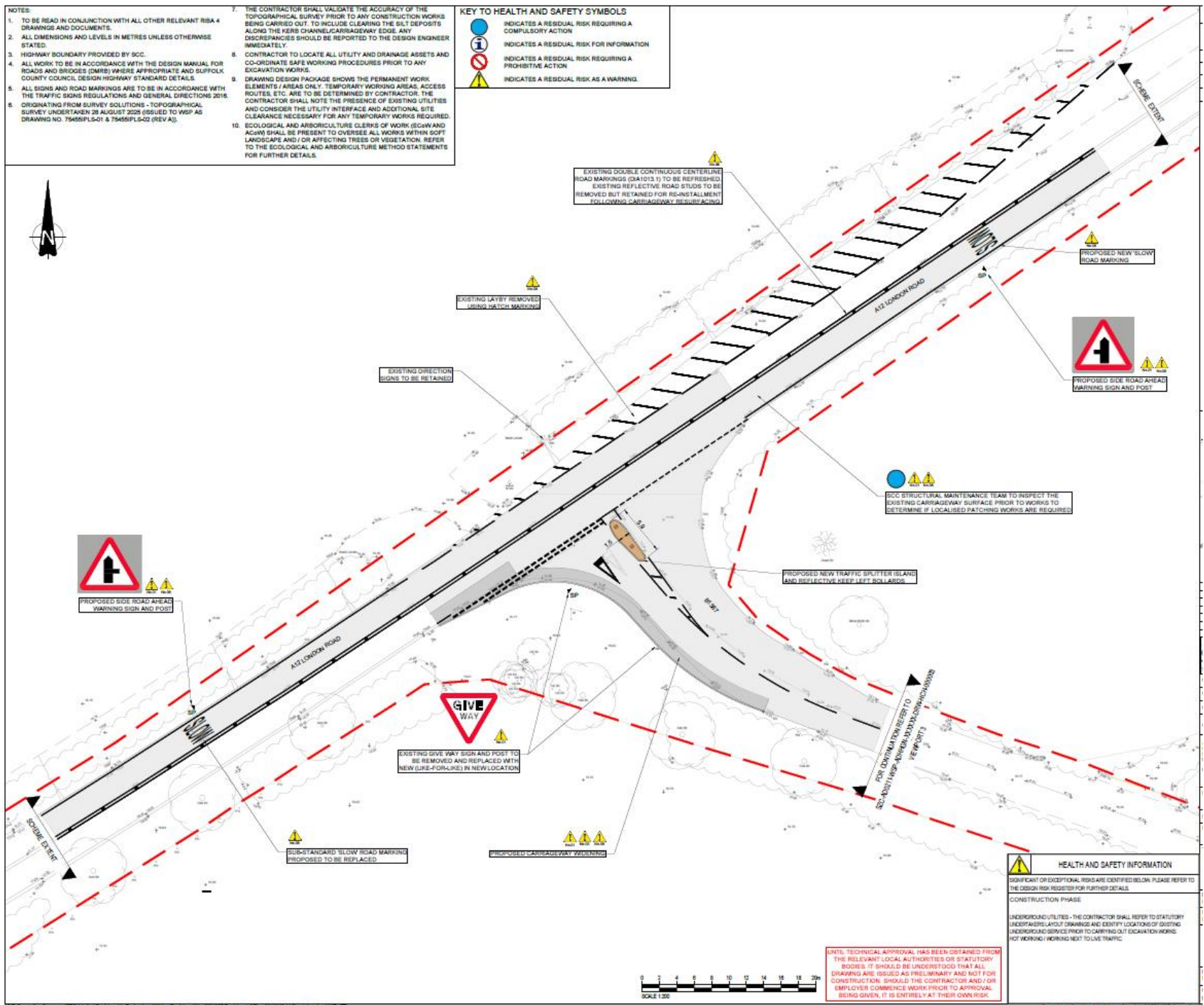
B1125 closure cont...

New Road Layout Ahead signs

- Current proposals shown below – to be located prior to revised ADS signs



B1387/A12 junction



B1125 Local Roads Scheme

Traffic Regulation Orders: What, How, When and Who

What

Traffic Regulation Orders (TROs) are legal documents for one-way systems, speed limits, parking restrictions, road closures and other ways councils regulate traffic. TROs can be permanent, or TTRO (Temporary Traffic Regulation Orders) and ETRO (Experimental).

How

Every TRO needs to go through a formal period of consultation (3 wks) before it is signed by SCC.

The B1125 will be an Experimental (ETRO) order. ETRO consulted on over 6 months (min.) before it can be signed into law. Regular reviews allow flexibility to change or remove the restriction without further consultation. Views expressed are considered before making permanent.

When

An ETRO can be implemented (after a brief notification period) immediately, allowing construction to continue around the restriction. Success will be monitored and once complete can be signed in to law when the (6 month) consultation period is closed (assuming no significant objections are received). If not successful the order is returned to 'normal'.

Who

Local notices and posters will provide information on the restrictions being consulted on. Local business and other 'statutory consultees' (such as police and emergency services) will be notified by email, and there will be an electronic portal where views on the scheme can be expressed. Plans will be available in SZC Offices and the local library/village hall.

B1125 Transport Working Group

Scheme Acceptance

As part of the strategy to close the B1125 for through traffic south of Blythburgh, it was agreed that the condition of the B1387 would be improved as this will be the route for all traffic in and out of Walberswick from the A12. These improvements are reflected in the agreed scheme.

The performance of the B1387/A12 junction will be kept under review by the Working Group, in particular with regard to northbound A12 traffic turning right on the B1387 and any issues with queuing traffic. In this case the Transport Review Group would be requested to investigate further and consider any road safety impacts or proposed mitigation. This will include monitoring of the data gathered on the B1387 between the A12 and the B1125 as part of the ongoing traffic monitoring funded and reported by SZC.

In the near term, SZC and Suffolk Highways commit to coordinating the improvements in the B1387 and the closure of the B1125 such that the B1125 would not be closed until the work on the B1387 was completed. This coordination is essential and support for the scheme from the Parish Councils is predicated on this coordinated approach so as to avoid any need for a long diversion coming in or out of Walberswick.

On this basis, the B1125 (North) Transport Working Group confirm their acceptance of the B1125 (North) Transport Scheme presented on 8th Sept 2025 as the fixed design for technical approval.

We make this agreement with the following points assumed:

- Observation of the A12/B1387 junction by the TRG as noted above will continue
- Discussion will continue on:
 - Feedback from ETRO consultation
 - Associated B1387 work
 - Any alterations to the design that are required by SCC at technical approval

B1125 Transport Working Group

B1387 design and implementation



Draft design
produced



Contractor
engaged



Initial costing
complete and
funding request
submitted to
Sizewell C



Funding
confirmed by
Sizewell C

B1125 Transport Working Group

B1387 design and implementation

Phase 1

Skirting back the road edge
Removal of silt and debris
Drainage works – excavation of new ditches
Localised kerbing and drainage collection points
Vegetation management

Phase 2

Localised widening and patching of existing carriageway
Aiming for consistent 5.5m carriageway width
Potential remedial works to access points

Phase 3

Resurfacing/surface dressing (treatment TBC) between A12 junction and B1125 junction (320m)
Road markings