

# Walberswick Village News

December 2024 | Issue 337



## Festive Greetings to all our readers

### Carols on the Green

Harry Edwards, with John Flack and his band, will once again be in attendance for the village's traditional carols around the Christmas tree on Monday, 16 December at 7pm. Mulled wine, mince pies and further entertainment will be available afterwards in the Village Hall.

The event is organised by the community, receives no funding, and is entirely dependent on the generosity of villagers. We are really appreciative of your donations of mulled wine and mince pies. To arrange a drop-off or collection, please contact **Hannah Sutton** by text on 07992 505954 or at [hannahsutton2013@hotmail.com](mailto:hannahsutton2013@hotmail.com).



### Christmas tree on the Green

The Christmas tree on the Green should be up in early December. In village tradition, residents, friends and visitors are invited to add their personalised Christmas decorations in memory of a loved one. Please make sure your decorations are winter weather-proof and are attached securely to the tree. If you have any spare decorations, please do add them to the tree. **Editor**

### Cancer Research Christmas Fayre

We hope to see lots of friendly faces at our fundraiser on Saturday, 7 December (10am - 12 noon in the Village Hall). If you have anything to donate, please refer to last month's Village News insert to contact the appropriate person, or get in touch with me. In particular we would be delighted to receive homemade biscuits to serve with the teas and coffees, as well as cakes, gifts, bottles and handmade Christmas craft items for the stalls.



If you wish, please make a donation at our Cancer Research Giving page: [tinyurl.com/wwchristmasfayre24](https://tinyurl.com/wwchristmasfayre24), or by scanning the QR code. For a preview, please do follow us on Instagram [@walberswickchristmasfayre](https://www.instagram.com/walberswickchristmasfayre).

We will be able to accept card and contactless payments, but we only have a few devices so cash is definitely preferred please.

Thank you for your support and we very much look forward to seeing you.

**Guy Parry** 07775 512995 | [parry.guy@gmail.com](mailto:parry.guy@gmail.com)

### Send Christmas greetings

Each year a number of people in the village sign a list held in the Tuck Shop, making a donation to a nominated Charity instead of actually delivering individual Christmas Cards. This year the charity is the RNLI Walberswick Branch. If you would like to do this, please sign the list in the Tuck Shop (from 1 December). The list will then be displayed in the window two weeks before Christmas so that all your friends will know you have not forgotten them and that you wish them a Merry Christmas and a Healthy and Happy New Year. **Pat Lancaster**

### Twelve Days of Christmas exhibition

Walberswick painter Sarah Muir Poland will be exhibiting 12 paintings online in December. Twelve percent of each sale will be donated to the Walberswick Against Lion Link (WALL) fighting fund. Sarah's paintings can be viewed on Instagram [@sarahmuirpoland](https://www.instagram.com/sarahmuirpoland) from 1 December at 9am when they go live, or at her studio by arrangement. Contact **Sarah Muir Poland** on 07881 820102 for more information.

### The Anchor

[info@anchoratwalberswick.com](mailto:info@anchoratwalberswick.com)

01502 722112

[www.anchoratwalberswick.com](http://www.anchoratwalberswick.com)

Reservations essential. Please check our website for full details

### Sophie, Mark & the team wish all of you a very Happy Christmas and a great New Year

**Friday, 27 December:** Open Mic with special guests.

Phone us to register your stage appearance

**Saturday, 28 December:** The Anchor's Festive Family Bingo night

**Sunday, 29 December:** Sophie's Curry and William & Kate's Quiz

**New Year's Eve:** 5.30pm special family two-course supper - a whole roast chicken with all the trimmings AND fireworks  
7.30pm a two or three-course supper set menu. Anchor Disco and fireworks.



## Walberswick Common Lands Charity

### Environmental Stewardship Update

Walberswick Common Lands Charity has been involved, as a landowner, with the King Charles III footpath plans and the National Grid Ventures borehole works. Both have been very keen to minimise disturbance of the habitat known as 'vegetated shingle' and it has been interesting to delve beneath the stones. The National Landscapes Association tells us more about this shingle:

"This is a rare habitat but Suffolk is lucky enough to have about a fifth of Britain's vegetated shingle. It is also surprisingly fragile and has huge value for wildlife. The shingle environment is a harsh place to live: it is dry with little fresh water and low rainfall. Any moisture drains

quickly through the gaps in the shingle stones. It is also salty and windy with limited nutrients. Shingle plants adapt by having succulent stems and leaves, deep fleshy roots to maximise water uptake, and a number of other adaptations. As the debris from the plants of previous years collects on the surface, it holds on to both moisture and seeds. This very thin 'soil' layer is critical to the germination, establishment and continued survival of shingle plants. Gradually the beach develops with the stones closest to the sea stabilising with shingle plants adapted to the conditions."

There is so much going on out there; enjoy it.

**Vanessa Tucker, WCLC Trustee**

## Walberswick Parish Council

### Nominative Trustee to Walberswick Common Lands Charity (WCLC)

The Parish Council is delighted to announce that at the last meeting of the Council a resolution was passed to appoint Richard Leiper KC for a further four year term as one of the Parish Council's Nominative Trustees to WCLC. Richard currently serves as Chair of the WCLC Trustees and we both congratulate him and wish him well for his second term as a Trustee.

### Sizewell C

The impact of the Sizewell C (SZC) project on all those who live in Coastal Suffolk is now starting to become apparent. While the Parish Council will continue to fight this inappropriate and destructive project, we are also participating in the various working groups and forums that have been set up to help mitigate some of the most damaging impacts on transport and the road network.

These include the Northern Transport Forum and the B1125 Working Group. The latest update can be found at [tinyurl.com/2mx5ue3m](https://tinyurl.com/2mx5ue3m).

The WPC will continue to provide regular updates via our website and the Village News. SZC is legally mandated to regularly post the many road closures, diversions and movements of Abnormal Loads on their website and also to investigate traffic related issues that are reported to them by members of the public and these can be seen at [www.szcworkstracker.co.uk/latest-info](https://www.szcworkstracker.co.uk/latest-info).

### Next Parish Council meeting

The next meeting will be held on Monday, 9 December at 7pm in the Heritage Hut and is open to members of the public. Full details will be published on the village website, or for further information contact the Parish Clerk at [clerk@walberswick-pc.gov.uk](mailto:clerk@walberswick-pc.gov.uk)



## Christmases gone wrong inspire Richard Curtis' new film

Richard Curtis' new Christmas movie is an animated kids film adapted from his book of short stories, *That Christmas*, published in 2021. It was inspired by the many Christmases the Curtis family have spent in Walberswick and is a funny, moving and joyful comedy of a Christmas gone wrong.

The film is set in a fictional Suffolk coastal town and follows several families preparing for Christmas Day. When a blizzard hits the town, chaos ensues. It is about family and friends, love and loneliness, and Santa Claus making a big mistake, not to mention an enormous number of turkeys. You will recognise many well-known voices, including Bill Nighy, Fiona Shaw, Jodie Whittaker, and Brian Cox as Santa Claus. Ed Sheeran has written and recorded an original song for the film. The accompanying video, with scenes of Southwold, can be viewed at [tinyurl.com/thatxmas](https://tinyurl.com/thatxmas).

The 90-minute film launches on Netflix on 4 December and is perfect Christmas viewing for all the family. **Editor**

### Planning applications

At the time of publication, the following properties were awaiting a decision:

**Tower Cottage**, Palmers Lane | **The Beeches**, Millfield Road | **Box Bush**, Seven Acres Lane | **Hérons**, Church Field

The latest applications & Advisory Group Reports, can be found on the Walberswick [website](#).



**THE BLACK DOG DELI**  
WALBERSWICK  
Est. 2013

## The Black Dog Deli

The award-winning Black Dog Deli is gearing up for Christmas and it's going to be big! Now taking orders for cheese, glazed ham, gravadlax, Beef Wellington, Christmas hampers, fine wine, and lots more. Please order early to avoid disappointment.

Closed Christmas Day

**01502 723925**

**@blackdogdelifoods on Instagram**

Due to the festive break, the January edition of the Village News will be delivered a little later than usual.



## The results of the church survey are in

St Andrew's Church recently surveyed the community seeking to find out what villagers and visitors alike value about the parish church, as well as how it could better serve people of all ages in Walberswick. The results of the survey have now been analysed and are available on the village website at [tinyurl.com/52ae7bkm](https://tinyurl.com/52ae7bkm). **Revd Russ Gant**

## The shoeboxes are all packed up

Twenty-seven shoeboxes, filled with love and destined for families and the elderly in Eastern Europe, were received for the Link to Hope shoebox appeal. Thank you everyone for your enthusiastic and generous support for this project. **Christine Fisher**



## Accounts reviewer needed for the Village Hall

The Village Hall committee is looking for a volunteer to review its annual accounts as required by the Charity Commission. According to their website, you do not need to be a qualified accountant but should have some degree of knowledge and experience of working with accounts. The commitment required is estimated at 2-3 hours per year. It's an unpaid role but is highly valued by the committee. If you could do this, please contact **Martin Lovick** at [martin.lovick@gmail.com](mailto:martin.lovick@gmail.com).



## Diary Dates



### WI Christmas meeting

Thursday, 5 December, 2.30pm in the Village Hall

Deanna Tilston, founder of Tosier Chocolate, the independent family business, whose factory, shop, café and tasting rooms can be found on the Leiston Road in Middleton, will be discussing the production of their award-winning, bean-to-bar chocolate. Samples will be available as well as items for sale. Members only. **Muriel Wortley**



### Cancer Research Christmas Fayre

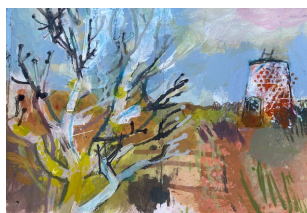
Saturday, 7 December, 10am - 12 noon in the Village Hall

Join us for refreshments (included in the entry fee of £2.50 for adults and £1 for kids), catch up with friends, and browse our festive stalls. **Guy Parry**

### Winter Studio Sale

Sunday, 8 December, 2-5pm at Bittern House, Millfield Road

Winter Studio Sale serving mulled wine in aid of local food banks. Browse art cards, ceramics and small paintings by Helen Riches and Anne Cardwell. All welcome. Contact **Helen Riches** on 07532 323944 for more information.



### Walberswick Local History Group talk

Saturday, 14 December, 2pm in the Village Hall

Charlie Haylock, the distinguished language historian, will be discussing the origins and meanings of surnames. He will explain the Anglo-Saxon and Viking 'by-names' and how surnames were introduced by the Normans. He will also talk about Suffolk names. There will be wine and snacks after the talk. Those wishing to attend should email Edward Wright at [ewright123@btinternet.com](mailto:ewright123@btinternet.com) to reserve a place. Tickets at £5 are available for guests accompanying members. **Harriett Wilson**

## Carols on The Green

Monday, 16 December, 7pm

### Carols by Candlelight

Monday, 23 December, 5pm in St Andrew's Church

The popular candlelit festival of lessons and carols led by the Walberswick choir. Come early to ensure a seat. **Julia Josephs**

## Church Matters

### St Andrew's Church Walberswick

Team Rector

**Revd Russ Gant**

[russ.gant@solebayteamministry.co.uk](mailto:russ.gant@solebayteamministry.co.uk)  
[solebayteamministry.co.uk](https://solebayteamministry.co.uk)

### December 2024 Services

**Sunday, 1 December 11.15am**

Sung Eucharist

Joined by Blythburgh

**Sunday, 8 December 6pm**

Advent Choral Evensong

**Sunday, 15 December 11.15am**

Sung Eucharist

**Sunday, 22 December 11.15am**

Family Service

10.45am coffee and pastries

**Monday, 23 December 5pm**

Candlelit Festival of Lessons  
and Carols

**Tuesday, 24 December 4.30pm**

Children's Crib Service

**Wednesday, 25 December 9.30am**

Choral Eucharist

**Sunday, 29 December 11.15am**

Team Service with Communion at  
Wangford. The Revd Alan Perry's  
farewell service

**Every Wednesday 10am**

Holy Communion

Coffee on first Wednesday

### Christmas Flowers

By the Walberswick flower arrangers

## Community Services

**Community Cafe:** Wednesday,  
18 December, 2pm-4.30pm in the  
Village Hall. Join us for mince pies  
and a festive vibe

**Mobile Library:** Friday,  
6 December 2.15pm-2.45pm,  
Village Hall car park.

**Norwich Bus:** Thursday,  
19 December. Please contact  
Mandy Erlenbach on 07590  
697575 to book a place.

**Mobile Post Office:** Wednesdays  
12 noon to 1pm in the Village Hall  
carpark.

VISIT THE VILLAGE WEBSITE

[walberswick-pc.gov.uk](https://walberswick-pc.gov.uk)

The next edition of the Village News will be published on 3 January 2025 The copy deadline is noon on 24 December 2024 and submissions should be sent to the editor at [walberswicknews@gmail.com](mailto:walberswicknews@gmail.com).



**Paul Bradley Ltd  
ARCHITECTURE**

Portland House, 43 High Street, Southwold  
Suffolk IP18 6AB t: **01502 725222**  
[www.paulbradleyarchitecture.com](http://www.paulbradleyarchitecture.com)



**SOUTHWOLD VOLUNTARY HELP CENTRE**

**Shopping, Befriending, Transport, Errands**

Can we help you, or can you help us?

Contact **01502 724549**

24-hour answerphone - [www.southwoldvhc.com](http://www.southwoldvhc.com)

Charity No. 1164155

**RICHARD KETT HORTICULTURE**

Nursery trained, third generation  
Award-winning gardener

**07503 048554**

**MARK BOTWRIGHT'S TREE SERVICES**

All aspects of tree surgery at competitive rates  
Fully qualified & insured

**01502 476334 or 07749 524778**

**GC WILSON CARPENTRY & CONSTRUCTION**

Complete Building Service  
*New builds, extensions, conversions  
and general maintenance*

Call Gareth: **07717 507412** or **01986 875658**

**Southwold Carpets, Curtains & Blinds Ltd**

*For all Flooring, Curtains, Blinds and Accessories,  
Haberdashery, Wool, Home & Giftware, & more*  
Visit us at Unit 1, Southwold Business Centre,  
St Edmunds Road, Southwold, IP18 6JU

**01502 724948 / [southwoldcarpets@btconnect.com](mailto:southwoldcarpets@btconnect.com)**  
[www.southwoldcarpets.co.uk](http://www.southwoldcarpets.co.uk)

**KW CLARKE BUTCHERS**

Family butcher and poulterer, general store  
Locally produced meat - Emmerdale Red Poll Beef  
Bramfield, Halesworth IP19 9JH

**01986 784244 - [kwclarkesorder@gmail.com](mailto:kwclarkesorder@gmail.com)**

**MANTINS SOLICITORS & NOTARIES**

*Residential & Commercial Conveyancing  
Wills, Probate, Powers of Attorney & Notarial Work*  
23a High Street, Southwold, Suffolk IP18 6AD  
Tel: **01502 724750** - [www.mantins.co.uk](http://www.mantins.co.uk)

**Alex Godfrey  
BICYCLE MECHANIC**

Qualified, insured and mobile  
Walberswick, @alexbikemech  
**07963 390057**

**EAST COAST LINEN HIRE**

*Offering high quality linen & soft towels*  
Laundering service for commercial  
& domestic clients

**Nicky 07809 771121 or 01986 875896**  
[eastcoastlinenhire@gmail.com](mailto:eastcoastlinenhire@gmail.com)

**AV-CONSTRUCTION**

**Specialists in Timber construction**

Complete Building Service  
[www.av-construction.co.uk](http://www.av-construction.co.uk)

[info@av-construction.co.uk](mailto:info@av-construction.co.uk) | **07453 360857**

**IAN POOLE DECORATING**

Painting, Tiling & Wallpapering  
Hand-painted kitchens & furniture

Email: [decor@ipooledecorator.co.uk](mailto:decor@ipooledecorator.co.uk)  
[www.ipooledecorator.co.uk](http://www.ipooledecorator.co.uk) | Reliable & fully insured  
**01502 710257 / 07952 022436**

**RUTHY'S WAY WINDOW CLEANING**

Walberswick, Suffolk

*All types of windows professionally cleaned*

Call SHANE: **01502 722595** or **07432 152207**

**THE HOUSEKEEPING COMPANY**

Cleaning between lets, second homes cared for  
Full caretaking service  
Professional laundry service

**01502 725746 | 07795 560245**

**THE MORTON PARTNERSHIP**  
**Consultant Civil & Structural Engineers**  
**Historic Building Specialists**

*We specialise in low cost repair options  
to buildings and can assist you with  
any building problem*

**Suffolk Office:** Brunel House, Norwich Rd,  
Halesworth, Suffolk IP19 8HX **01986 875651**

**London Office:** Old Timber Yard House  
55 The Timber Yard, Drysdale Street, London N1 6ND

**COOPER & DENNY LTD - Building Contractors**

*Professional service & free estimates*

26 Fountain Way, Reydon IP18 6SZ

[info@cooperdenny.com](mailto:info@cooperdenny.com)

**01502 723366**

**OUTNEY MEADOW LTD & CR HANCY GAS**

Outney Meadow Caravan Park, Bungay NR35 1HG

*Camping and canoe hire by the Waveney*

**01986 892338** - [gas@outneymeadow.co.uk](mailto:gas@outneymeadow.co.uk)



Advertising Manager: Penny Fox  
[pennyfox49@hotmail.com](mailto:pennyfox49@hotmail.com) | **07990 994384**